

ARMEEN

ELECTROMECHANICAL WORKS L.L.C.

Company Profile

Content List



- 01 About us
- 02 Company License
- 03 Organization Structure
- 04 Our Employees
- 05 Vision & Mission
- 06 Our Departments
- 07 Electrical
- 08 Plumbing
- 09 H V A C
- 10 Fire Alarm & Fire Fighting
- 11 Fire Fighting Installations
- 12 UPS Systems
- 13 UPS Systems
- 14 Our Quality Policy
- 15 Project Quality plan

Armeen Electromechanical Works L.L.C

We at Armeen Electromechanical Works LLC are equipped with the technical and organizational efficiencies needed to help construction companies fulfill their ambitious electro-mechanical and ELV engineering requirements.

With our workforce including senior engineers, project managers, project coordinators, technicians and helpers, AEM instills quality in every aspect of its work. And with a meticulous approach to project planning, AEM ensures that all projects are completed on time...every time!

Since its inception AEM has operated along the principles of Modulating Management. As per the need of the hour, we have adapted and excelled for the benefit of our customers. The phenomenal growth the company has experienced and the height it has scaled within such a short period is testament to the company's dedication in providing the best of services and achieving higher levels of customer satisfaction with every project completed.



Contact us:

Dubai, UAE

P.O Box: 444891

Tel: +971 56 360 3686

E-mail: info@aem-mep.com

Web: www.aem-mep.com

Company License



رخصة تجارية Commercial License

تفاصيل الرخصة / License Details

License No.	826568	رقم الرخصة
Company Name	ARMEEN ELECTROMECHANICAL WORKS LLC	اسم الشركة
Trade Name	ARMEEN ELECTROMECHANICAL WORKS LLC	الإسم التجاري
Legal Type	Limited Liability Company(LLC)	الشكل القانوني
Expiry Date	16/02/2020	تاريخ الإنتهاء
D&B D-U-N-S ® No	0	الرقم العالمي
Register No.	1393166	رقم السجل التجاري
Issue Date	17/02/2019	تاريخ الإصدار
Main License No.	826568	رقم الرخصة الام
DCCI No.	316412	عضوية الغرفة

الاطراف / License Members

Share / الحصص	Role / الصفة	Nationality / الجنسية	Name / الإسم	No./ الشخص
	Manager / مدير	India / الهند	سيف الدين عزمى محمد	750790
			SAIFUDDIN AZMI MOHAMMED	

نشاط الرخصة التجارية / License Activities

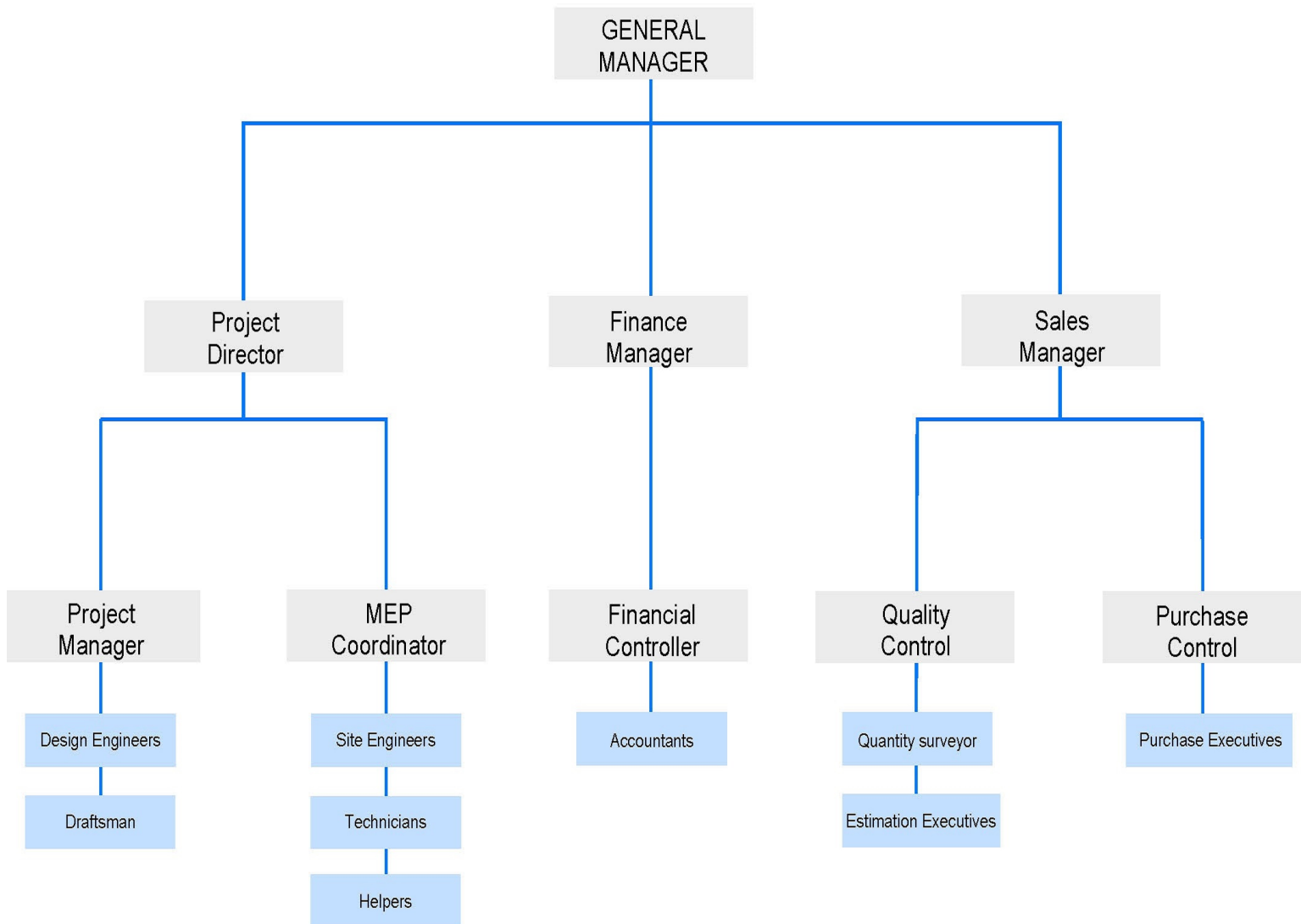
Carpentry & Flooring Contracting	اعمال النجارة وتركيب الارضيات
Floor and wall Tiling Works	اعمال تبيط الارضيات والحوائط
Electromechanical Equipment Installation and Maintenance	اعمال تركيب المعدات الكهروميكانيكية وصيانتها
Painting Contracting	اعمال الاصباغ والدهانات
Plumbing & Sanitary Contracting	اعمال التمديدات والتركيبات الصحية
Swimming Pools Installation	تركيب أحواض السباحة
Technical Services Contracting	مقاولات الخدمات الفنية
Electromechanical Works Contracting	مقاولات الأعمال الإلكترونية ميكانيكية
Air-Conditioning, Ventilations & Air Filtration Systems Installation & Maintenance	تركيب أنظمة التكييف والتهوية وتنقية الهواء وصيانتها
Fire Fighting Safety Equipment Installation	تركيب معدات السلامة واطفاء الحريق

Print Date	17/02/2019	17:53	تاريخ الطباعة	Receipt No.	13118485	رقم الإيصال
------------	------------	-------	---------------	-------------	----------	-------------

يمكنك الآن تجديد رخصتك التجارية من خلال الرسائل النصية القصيرة، أرسل رقم الرخصة إلى 6969 (دو/اتصالات) للحصول على إذن الدفع.
Now you can renew your trade license by sending a text message (SMS). Send your trade license number to 6969 (Du/ Etisalat) to receive payment

وثيقة إلكترونية معتمدة وصادرة بدون توقيع من دائرة التنمية الاقتصادية. لمراجعة صحة البيانات الواردة في الرخصة برجاء زيارة الموقع www.dubaided.gov.ae
Approved electronic document issued without signature by the Department of Economic Development. To verify the license kindly visit www.dubaided.gov.ae

Organization Structure



Our Employees

The Company recognizes the importance of the valuable contributions the right people make in helping the organization realize its ambitions. More importantly, the Company recognizes the need to reward these people in a way that is at par with the value they add to making AEM the success story it is today. We, as a company, are completely committed in developing and rewarding our employees who form the very core of our company and have created specific programs to motivate them at every level.

The Company is structured such that each department is headed by qualified and experienced managers who, with their team, work in a highly challenging, yet rewarding, environment delivering service of the highest quality to our customers.

S. No	Job Description	No. of Employees
1	General Manager	01
2	Projects Director	01
3	Sales Manager	01
4	Project Manager - MEP	01
Project Execution		
5	Engineers - (Design & Estimation)	03
6	Site Engineers - (Projects)	02
7	Electrician	05
8	Plumber	02
9	AC-Technician	04
10	Helper	06



Our Departments

Technical Department

Duties here include site surveying, preparation of detailed Bill of Quantities, project evaluation, as per the Consultant's design drawings and Specifications.

Tender & Estimation Department

Our extensive experience and knowledge within construction, technical, methods of construction allows us to accurately tender for projects.

The Estimating & Tendering services which we provide our clients with includes:

1. Builders Quantities produced from drawings and specifications.
2. Preparation and submission of accurate competitive tenders/estimates.
3. Following up on submitted tenders .
4. Negotiating submitted tenders/contracts.

Design & Drafting Department

This department includes qualified Engineers and skilled draftsman capable of delivering concept designs, perform Engineering calculations, Shop drawings and As-build drawings for all Mechanical, Electrical and Plumbing projects.

Cost Planning & Quantity Surveying Department

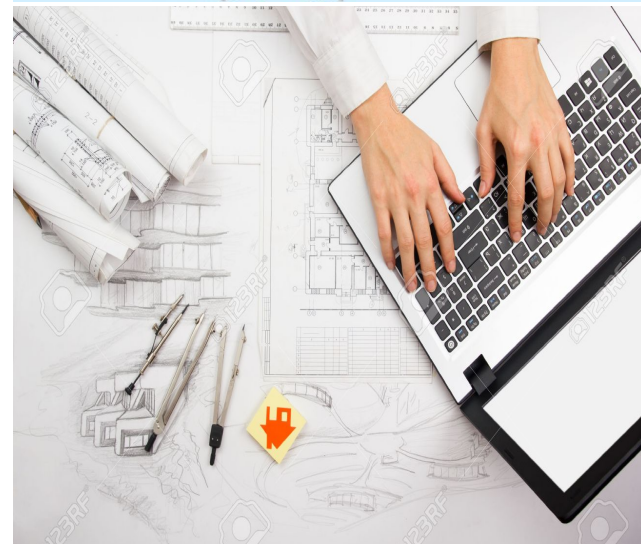
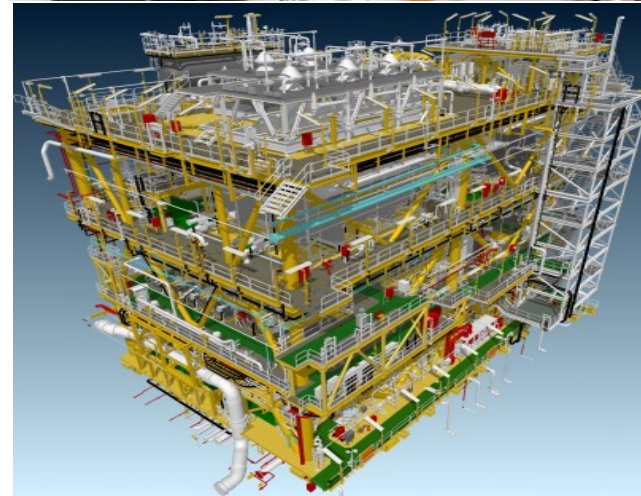
Duties in this division include preparation of take-off quantities and comparison of these quantities with the approved drawings for identification of any variation in quantity and dimensions. It provides accurate information on project schedules and constantly monitors activities in order to identify and eliminate the factors that could delay the project.

The cost planning process consists essentially of three phases:

The first stage involves the establishment of a realistic initial estimate (Preliminary Approximate Estimate)

The second stage plans how this estimate should be spent among the various parts or elements of the project (Cost Plan)

The final stage is a checking process to ensure that the actual design details for the various elements can be constructed within the cost plan (Cost Checking)



Electrical Works

ELECTRICAL INSTALLATIONS:

The fixed Electrical installation is the Electrical wiring, Electrical machinery and Electrical components that are fixed to a building. Installations includes:

L.V Panels/Switchgear, SMDB's & DB's, Generator installations, ceiling lights, power sockets and Industrial machinery termination. AEM will plan, design, supply and install, Testing & Commissioning, generate reports, Lux level Calculations, maintain the installations, fault finding and repairing systems to a high standard. Work organization and self-management, communication and interpersonal skills, problem solving, flexibility and a deep body of knowledge are the universal attributes of our electricians.

- LV Panels / Switchgear
- Bus Bar Risers
- Cables and Wires
- Lighting Control System
- Generator Set
- Cable Tray and Trunking
- Isolators
- Wiring Accessories
- Aircraft warning Lights
- LED Lights
- Earthing System
- Lightning Protection
- Underfloor Trunking
- Low Current system
- CCTV System
- SMATV System
- Fire Alarm System
- Emergency Lighting
- Structured Cabling
- Access Control
- Building Management System



ELECTRICAL MAINTENANCE

Maintenance involves fixing any sort of electrical device should it become out of order or broken (known as repair, unscheduled, or casualty maintenance). Electrical maintenance also involves the care and checklist of electrical equipment/instruments to avoid any breakdown or fault. To tighten all electrical connections, to upgrade the power rating of safety-switches is also a part of Electrical Maintenance. Electrical maintenance services offered at all levels for industrial, commercial and residential.

Plumbing Works

Our highly skilled plumber's team are experienced in Residential and commercial plumbing, with excellent knowledge of Installation, maintenance, and repairing of pipes and fixtures associated with water distribution, and sanitation systems. Inspecting drainage and other plumbing systems for compliance with local and national regulations.



Our Services:

Supply & Installations of Water supply system using PVC, PPR, Cu, Pex piping.

Firefighting and sprinkler system with complete piping.

Water tanks, water pumps and Firefighting pumps.

Compressed air system and vacuum system.

Domestic water heaters & Central heating system with hot water calorifier & exchangers.

Rain water & Drainage system.

LPG & Natural gas system

Domestic water & Grey water treatments

LPG & Natural gas system



HVAC Works



Scope of Duct Works:

- Fabrication of GI Duct
- Installation & Insulation
- Fixing of Duct
- Air outlets
- Machine connection
- VCD FD, ,
- Sound Attenuators
- Fans
- Splitter Damper with all accessories
- Access Door fixing

Scope of Machine Unit Works:

- Installing of indoor machine
- Installing of outdoor machine
- DX Machines works (FCU's)
- DX Machines works (CU's)
- Copper Piping
- Testing & commissioning



Scope of Chilled Water Pipe Works:

- Chilled Water Pipe installation
- Supports
- MI threaded fittings
- Butt weld fitting with insulation including Canvas cloth vapour barrier, including all fittings accessories & Valves
- Testing & Commissioning



Fire Alarm & Fire Fighting

AEM offers total solution in Fire Detection, Fire Alarm and Fire Extinguishing System for the protection of entire range of Industries and Application such as - power plant, office building, residential buildings, warehouse and factory sheds, etc.

One of our main functions is Design, Supply and Installation of Fire Alarm & Fire Fighting Systems.

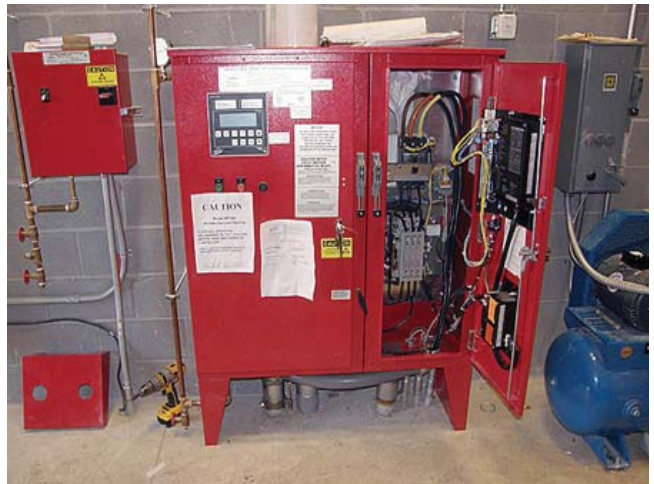
We are well managed by a team of qualified and experienced fire officers, engineers, skilled technicians and mechanics ready to take on any job of whatsoever nature and volume.

Our organization endeavors to continually and effectively improve the Quality of Service to meet our Client's requirements in accordance to the international standards like BSI, UL, FM and NFPA & Local Emirate Standards.



Fire Alarm & Fire Fighting

Fire Pumps Installations



GE UN-interruptible Power Supply

We offer a wide range of GE UPS power supply which includes Three phase and single phase output UPS power supply.

GE GT Series UPS – CE Listed (6 & 10kVA)

GE LP 11 Series UPS – CE Listed (3 – 10kVA)

GE Match Series UPS – CE Listed (500VA – 3kVA)

GE VCL Series UPS – CE Listed (400-1500 VA)

GE VH Series UPS – CE Listed (700VA – 3kVA)

GE Three Phase In&Single Phase Out UPS

GE LP 31 Series UPS – CE Listed (8 – 20kVA) – LP31

GE Three Phase In& Three Phase Out UPS

GE LP33 Series II UPS – 15-100kVa, UL Version 208/120VAC

GE TLE Series UPS 160-1000kW 60Hz/ UL listed

GE TLE Series UPS 160-800kW 50Hz / CE listed

GE TLE Series UPS 30-40kW 50Hz / CE listed

GE TLE Series UPS 40-120kW 50Hz / CE listed

GE TLE Series UPS 40-150kW Scalable, 60Hz / UL listed



Critical Power from GE

TLE Series™ UPS

TLE30-40 & TLE40-120 kVA/kW Scalable
three phase 400 Vac



AEG UN-interruptible Power Supply

We ensure continuous availability of power supply and the safe operation of critical applications with wide range of AEG UPS systems:

PROTECT 8 33 S14

10 - 120 kVA

up to 8 units in parallel operation

Industrial UPS with galvanic isolation at output line

Protect 8 33 S10

10 - 120 kVA

“building block” design

Up to 8 units in parallel operation

Protect 4

160 - 600 kVA

up to 8 units in parallel operation

Protect Plus M600

30 - 900 kVA

modular design

up to 3 units in parallel operation

Protect Plus S300

10 - 200 kVA

up to 8 units in parallel operation

Protect Plus M400

10 - 160 kVA

modular design

up to 4 systems in parallel operation

Protect A

500 - 1600 VA

Line-interactive UPS (VI)

Protect 1

10 - 20 kVA

Online/Double Conversion (VFI)

Protect C

1 - 10 kVA

Online/Double Conversion (VFI)



Our Quality Policy

Our Quality policy has been defined with the aim of enhancing our services to our customers in terms of better understanding of customer requirements, designing optimal solution to meet those requirements and building systems and process to ensure quality at all stages.

AEM management is committed to:

- Developing & improving the Quality management system periodically.
- Monitoring process towards building quality into our systems & services.
- Systematically evaluate & monitor the performance of our sub-contractors to assure the quality.
- Provide timely delivery to our customers.
- Identify the root cause of non-conformities and subsequently eliminating the same.
- Provide periodical training to all staff members to understand the importance of Quality Management System.

It has been our endeavor to create an environment of total quality as part of our culture in our system. To achieve this, we have been, still are and forever continuously improve the standards of our people, processes and services.

Project Quality Plan

Quality Management Method :

The quality plan is developed and approved during the project planning phase to confirm major deliverables milestone acceptance criteria and manage approved project processes.

Quality Plan Processes

Quality Assurance

Quality assurance activities focus on the processes being used to manage and deliver the solution to evaluate overall project performance on a regular basis.

Quality Control

Quality control activities are performed continually to verify that project management and project deliverables are of high quality and meet quality standards. Quality assurance also helps uncover causes of unsatisfactory results and establish lessons learned to avoid similar issues in this project.

Project Deliverables and Processes Acceptance Criteria

Project team members and key stakeholders agree at the project planning stage on formal project processes and major deliverable acceptance criteria that will be used to evaluate final deliverable results before the results are formally approved.

Project Overview

Describes the background and context for the project to provide its justification. Identifies the business value of the proposed deliverables.

Quality Standards

Description of how the project will satisfy the quality standards.

Quality Tools

List of all quality-related tools that the project will employ, how the tools will be used, and who will be responsible for managing and reporting from these tools.

Quality Manager's Responsibilities

Outline of the quality manager's responsibilities in that role. Description of how the quality manager will interact with the project manager and other team members in accomplishing these responsibilities.

